



# LAS VEGAS METROPOLITAN POLICE DEPARTMENT

# **CRIME ALERT NOTICE**

## **PUBLIC SAFETY**

### **POLICE IMPOSTER OR IMPERSONATING OFFICER INCIDENTS**

The Las Vegas Metropolitan Police Department's is distributing this Crime Alert Notice with the intent to advise you of criminal activity that may affect you and your community. Over the past few weeks local law enforcement agencies across the valley have responded to several different incidents of suspects believed to be impersonating a law enforcement officer. Please take precautions to protect yourself by practicing these crime prevention safety tips. **IF YOU TRULY BELIEVE THAT A VEHICLE WHICH IS PULLING YOU OVER MAY NOT BE A LAW ENFORCEMENT OFFICER:**

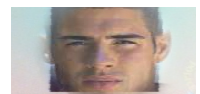
1. Call 911 from your cell phone and drive the speed limit. Tell the 911 police call taker that you are concerned that it may not be a real law enforcement officer. Turn on your car hazard flashers to acknowledge that you see the officer.
2. Drive to a well lit, busy area, such as the parking lot of a busy store.
3. If you do not have a cell phone then drive to a well lit, busy area.
4. Inform the police call taker you are attempting to find a safe location to stop and continue to update them with your location.
5. Be very specific about your location, such as direction of travel, mile markers on an interstate and cross streets in the area. If you are not familiar or do not see a street number, then use a "unique landmark" description such as a mall.
6. Inform the police call taker of your vehicle make, model and color. Request a "marked police vehicle" to respond.
7. If the police call taker cannot confirm that you are being pulled over by a police officer, stay on the phone with the call taker. Always drive carefully to a safe place, such as a local police department.
8. Be observant:
  - Observe the uniform/clothing description, any badges or patches, any type of lights on the vehicle to include red and/or blue, amount of lights, flashing strobes or single rotating light
  - Observe the vehicle description upon departure to include a tag and any other characteristics or markings.
  - Wait inside your vehicle at a safe location for law enforcement.
9. If you are issued documents that may be suspicious, contact the issuing agency about their legitimacy. Know that a legitimate law enforcement officer will not flash headlights at your vehicle in order to get you to pull over.
10. Below are an "official" LVMPD badge, uniform patch and ID Card.

**LVMPD Badge**



**LVMPD Uniform Patch**

**LVMPD Photo ID Card**



**POLICE OFFICER**

**A legitimate Law Enforcement Officer understands the concerns of the public. Law Enforcement Officers in unmarked vehicles or out of uniform will prominently display identification and/or badges on their person. A legitimate law enforcement officer will be prepared to identify themselves without hesitation to any member of the public. Once it is determined and verified you are stopped by a legitimate law enforcement officer, you are expected to comply with all lawful request or demands.**

**IF YOU HAVE ANY INFORMATION ON THESE CRIMES OR SEE ANY SUSPICIOUS ACTIVITY PLEASE BE A GOOD WITNESS AND CALL 311 FOR A NON-EMERGENCY AND 911 IF THERE IS A LIFE THREATENING EMERGENCY. YOU CAN ALSO BY CALLING **CRIME STOPPERS 385-5555** TO REMAIN ANONYMOUS!**